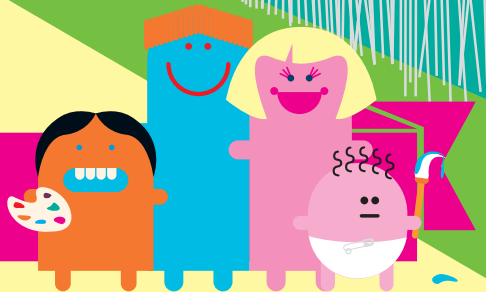


welcome to
mima
for families

mima

Use this guide to explore
mima as a family and make
a fortune teller together



Hello and welcome to mima for families.

Use this guide to explore mima and make a fortune teller together

mima is Middlesbrough's modern art gallery – it's free, friendly and open 6 days a week.

The artworks at mima are all about everyday life seen through artists' eyes. Artists like to share their thoughts and tell stories through their work. Some artists you'll recognise, others you won't, and that's OK.

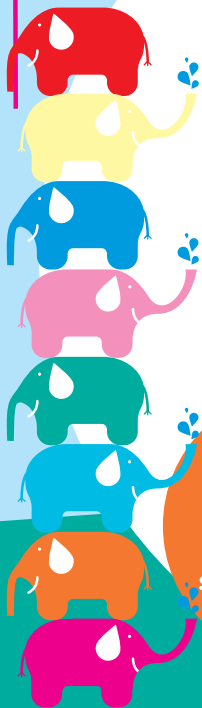
Whatever you think, the art on display will get you talking, so keep asking questions! **Need some help?** Remember to ask the gallery assistants about the artworks around you, or where to look next...

Did you know?

mima is the same height as eight elephants standing on each others' heads.

Now you're ready to look around mima, so why not go into the galleries to look, talk and have fun together.

**We love mima.
We hope
you do too.**



The galleries on each floor show work made by artists from the last 100 years. Look and chat together and try out some of these activities.

0

- Find an artwork that you can give the thumbs up to
- Ask a friend about an artwork you're unsure about
- Find a work that is **bigger** than you



Can you see the Bottle of Notes sculpture outside?

It is made up of words on the inside about a seagull flying.

How many seagulls can you count outside today?



1

- Find an artwork that makes you smile
- Look for something that feels familiar to you
- Tell someone an interesting fact about one of the artworks

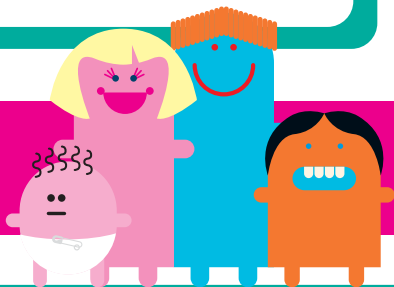
Say the word out loud when you find something in mima to match the word. Can you think of any other words?

big



bright scary shiny dull dark serious
tiny calm noisy huge mysterious
smelly happy sad friendly bright

We've hidden some of our mima family characters around the building. Can you spot any?



2

- **Rename** an artwork by one of the artists
- **Ask** a gallery assistant which artwork is their favourite and why?
- **Find** an artwork that is smaller than you

Can you spot a church that transforms into a rocket on this floor?



3

When you've reached the top floor, look around you or step out onto the roof terrace - how many of these can you see and count?



dogs



ducks



seagulls



cars



buses



clocks



square shapes



circular shapes

Did you know that mima has family activities and special events all year round, many of them are free?

Saturday art trolley **Every Saturday** **1 - 4pm | FREE**

Children of all ages can enjoy mima's popular art trolley. Get involved, create and make something to take home. All ages welcome.

School holiday art trolley **Every school holiday** **Tuesday - Friday** **11am - 12noon | FREE**



Image: eve photography

Mini mima **Every Thursday** **10 - 11.30am** **Term-time only**

Fun, interactive art activities with circle time and refreshments for 0-4s and their parents/carers. £3.50 per child. Accompanying adult free. Booking essential.

Seasonal special events **Various dates, school holidays**

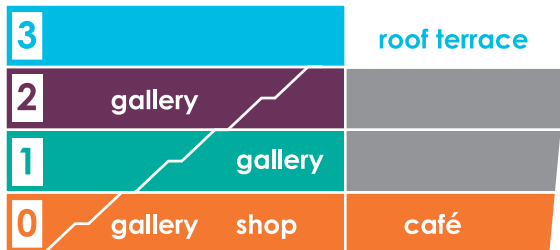
Check back often to keep up to date on special family events at mima. From halloween parties to summertime fun days - they're not to be missed!

For bookings or to find out more, call mima reception on 01642 726 720 during gallery opening times or check out our website.

visitmima.com
facebook.com/visitmima
twitter.com/mimamodernart

mima, Middlesbrough Institute of Modern Art,
Centre Square, Middlesbrough, TS1 2AZ
Tel: 01642 726 720

mima has
four floors
for you
to explore



A floor plan of mima is available from the ground floor reception area.

Remember: our staff are happy to help you make the most out of a visit to mima.

Pick up all our family resources at the family welcome area in the ground floor reception area. And why not visit our family friendly café and shop?

visitmima.com

facebook.com/visitmima

twitter.com/mimamodernart


Middlesbrough
moving forward

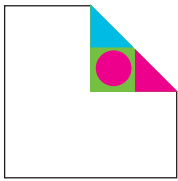


Supported using public funding by
**ARTS COUNCIL
ENGLAND**

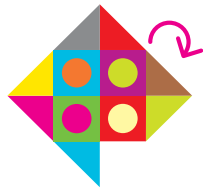
mima, Middlesbrough Institute of Modern Art,
Centre Square, Middlesbrough, TS1 2AZ
Tel: 01642 726 720

Make your own fortune teller

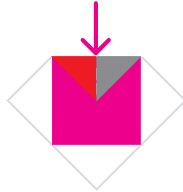
Print this out, cut around the square below and follow the instructions to make your very own mima fortune teller! Make it and have fun with it however you like. Why not come visit mima and use it to travel around our exhibitions?



1 Fold up all four corners with the fortune teller images facing down.



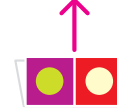
2 Once all the corners are folded, flip the fortune teller over.



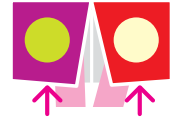
3 Fold the four corners up again.




4 Your fortune teller should look like this. Flip again and follow just a few more steps!



5 Now fold in half as shown.



6 Pop your fingers into the four folds and open and close to make creases.

<p>second floor</p>	<p>blue</p>	<p>white</p>	<p>third floor</p>
<p>pink</p>	<p>Forward, back Get up close to an artwork and take it in. Step back and look around the gallery again. Any differences?</p> <p>Are there any shapes you can find?</p> 		<p>green</p>
<p>yellow</p>	<p>20 questions Can your family or friends guess which artwork you've chosen in no more than 20 questions? Only answer yes or no.</p>		<p>brown</p>
<p>first floor</p>	<p>grey</p>	<p>red</p>	<p>ground floor</p>

Smile!
Find an artwork that makes you smile or feel happy.

Always ask questions!
How? What? Who? Where? Why?

In your room:
Which artwork would you hang on your wall?

Think out loud!
It's fine to talk and ask questions in the gallery - don't be afraid to make a noise!

Sing!
Which song would you sing whilst looking at your chosen artwork?

Go down...
Look at the artwork from a different level - do things look different?

Strike a pose!
Find an artwork with people in it - can you friends guess who you are?

What is the one thing you will remember from your trip today?

Which is the DARKEST artwork in the gallery?